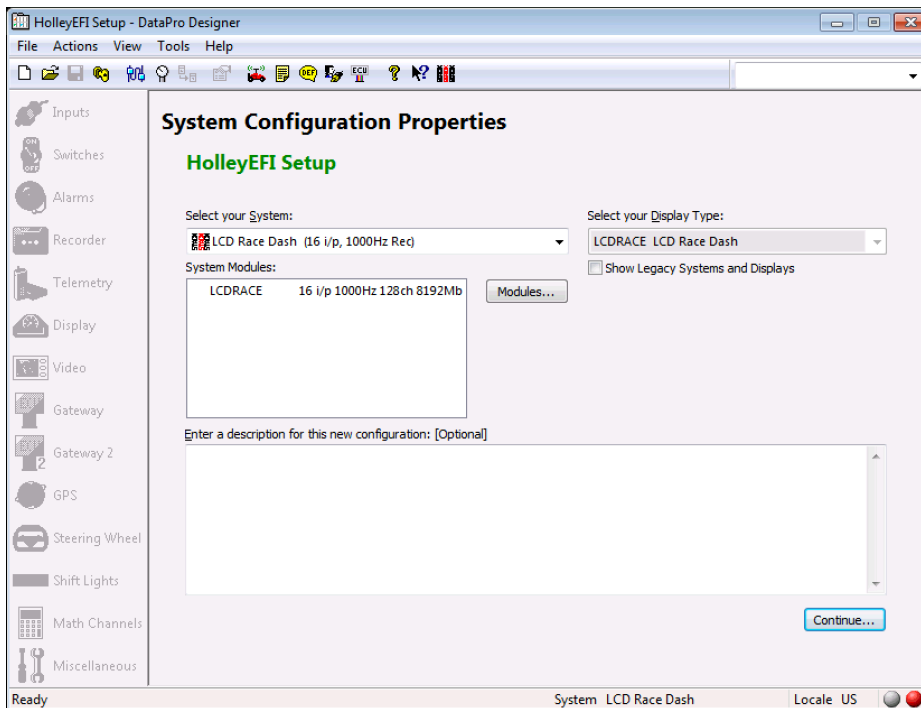




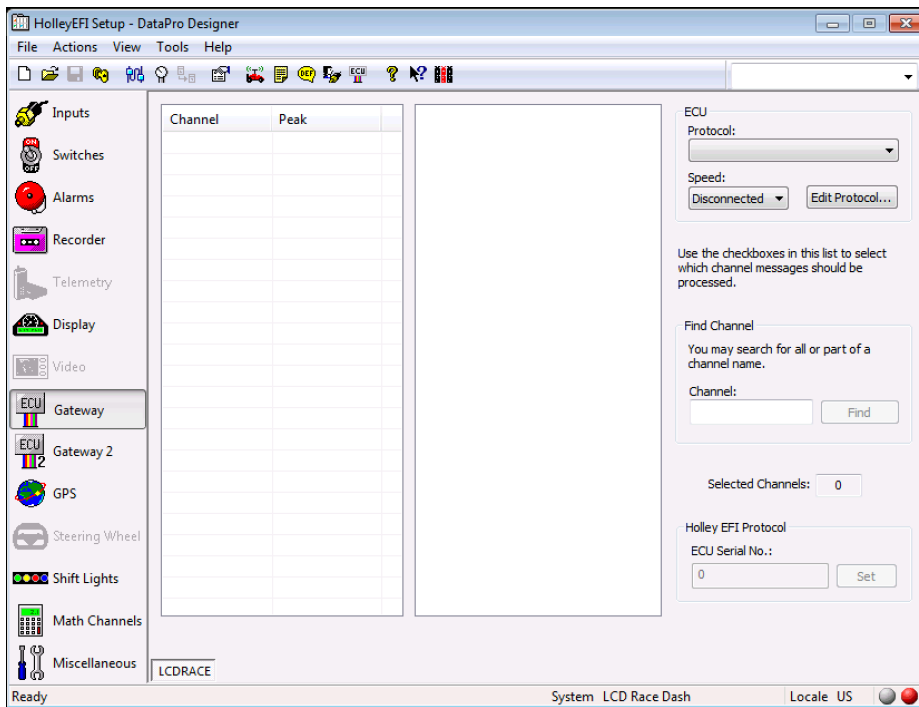
Connecting the LCD Race Display to Holley EFI via CAN Bus

Connecting your LCD Race Dash to your engine management system (EMS) can expand the data you are logging as well as allowing critical warnings to appear after setting them up in DataPro Designer. There is significant benefit to being able to see the data your EMS has on the CAN bus. Below are the steps involved to connect your LCD Race Dash to Holley EFI engine management. This guide assumes you have the latest version of DataPro (available on or website).

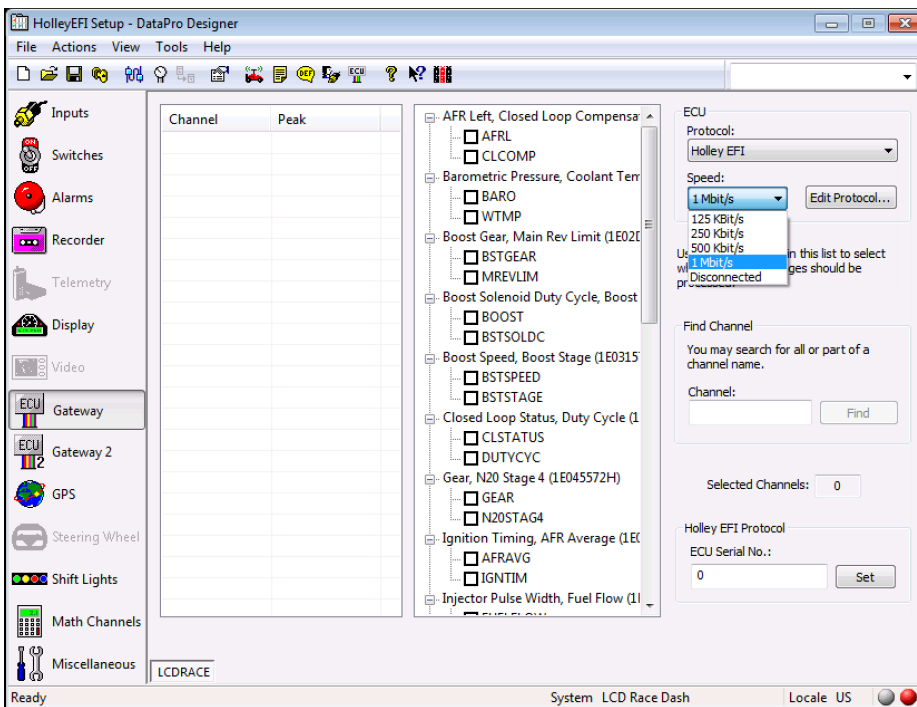
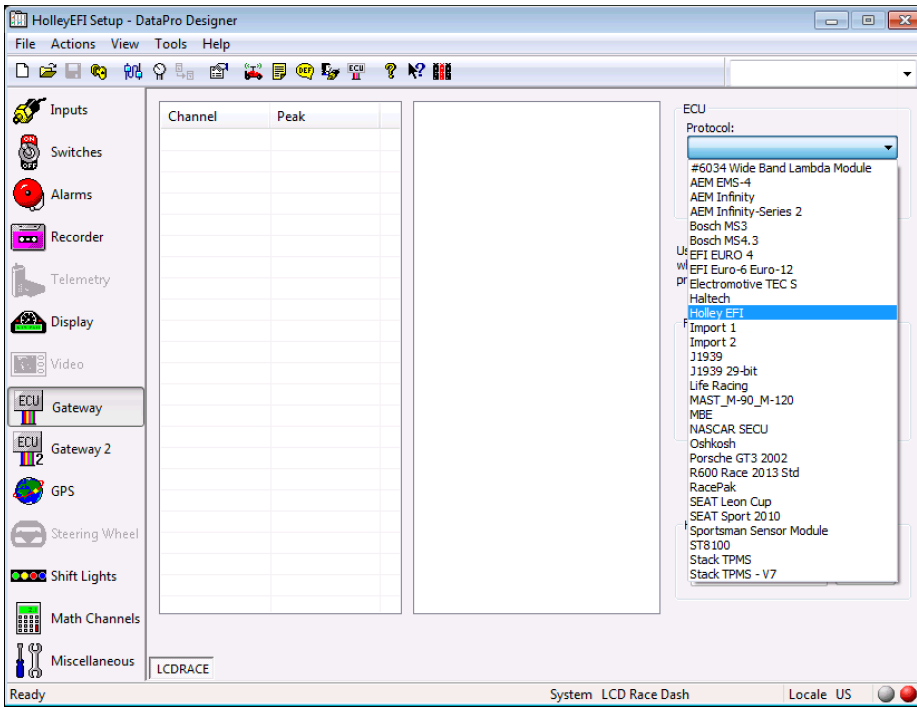
1.) Open DataPro Designer and start or load a configuration for the 6021/ST9918 LCD dash logger.



2.) Select the ECU Gateway (ECU Gateway 2, if applicable) tab on the left side of the DataPro Designer window.

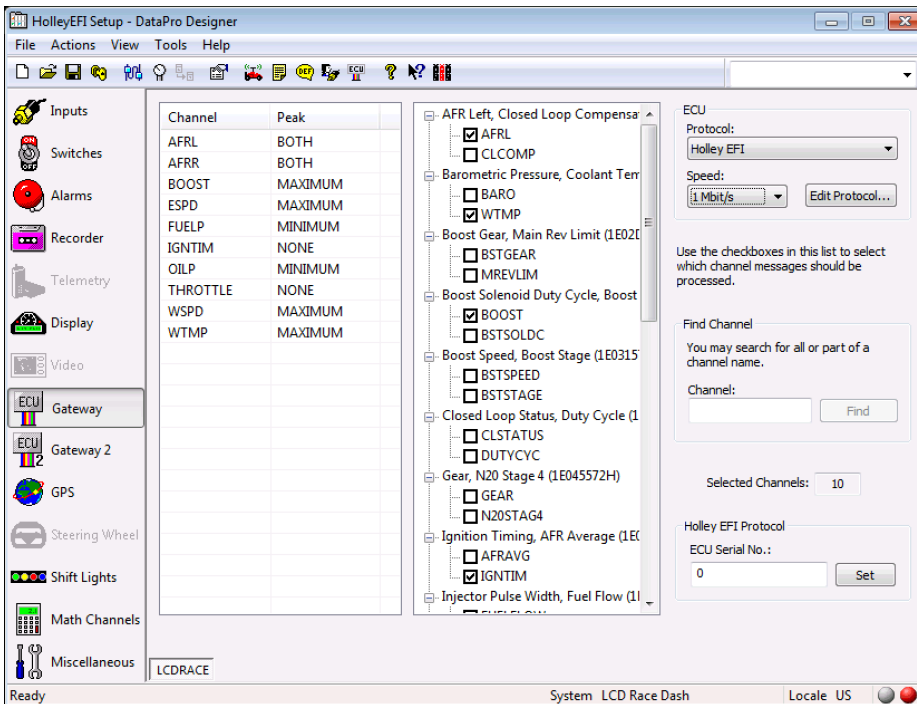


3.) Use the dropdown menu to select Holley EFI and set the CAN speed to 1mb/s



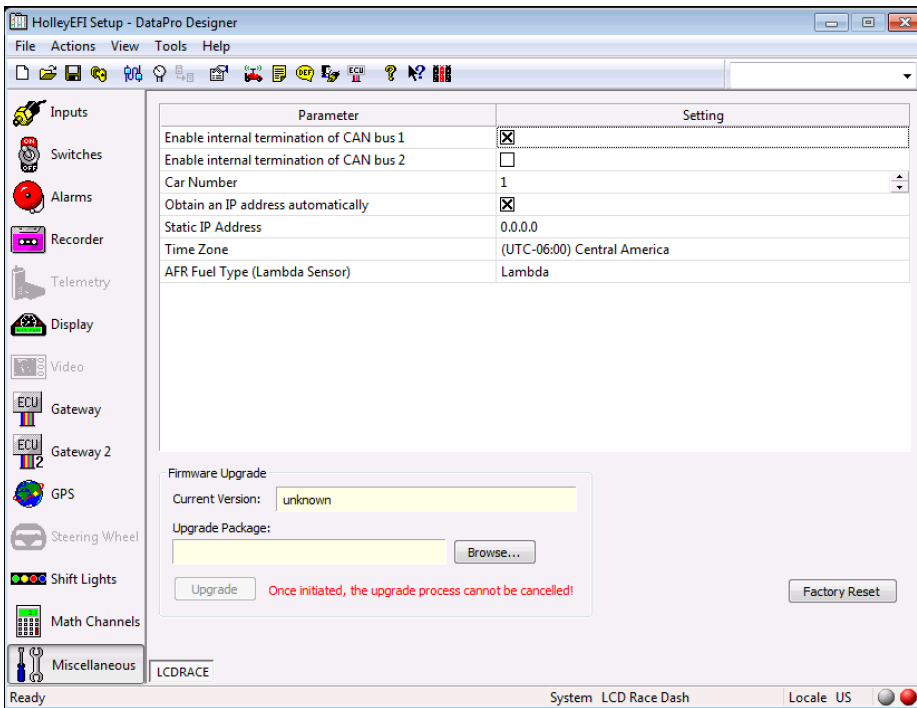
4.) Enter in your Holley EFI serial number and click the Set button. *NOTE: Without the serial number entered for the specific ECU you are connected to, the LCD Race Dash will not communicate.*

5.) Select the channels you wish to monitor/data log. Select how you would like the peak to function on each channel.



6.) Select the Miscellaneous tab on the left side of DataPro Designer

7.) Select the check box to Enable internal termination of CAN bus 1 (CAN bus 2 if applicable)



8.) Complete your configuration and upload to the LCD Race Dash.

